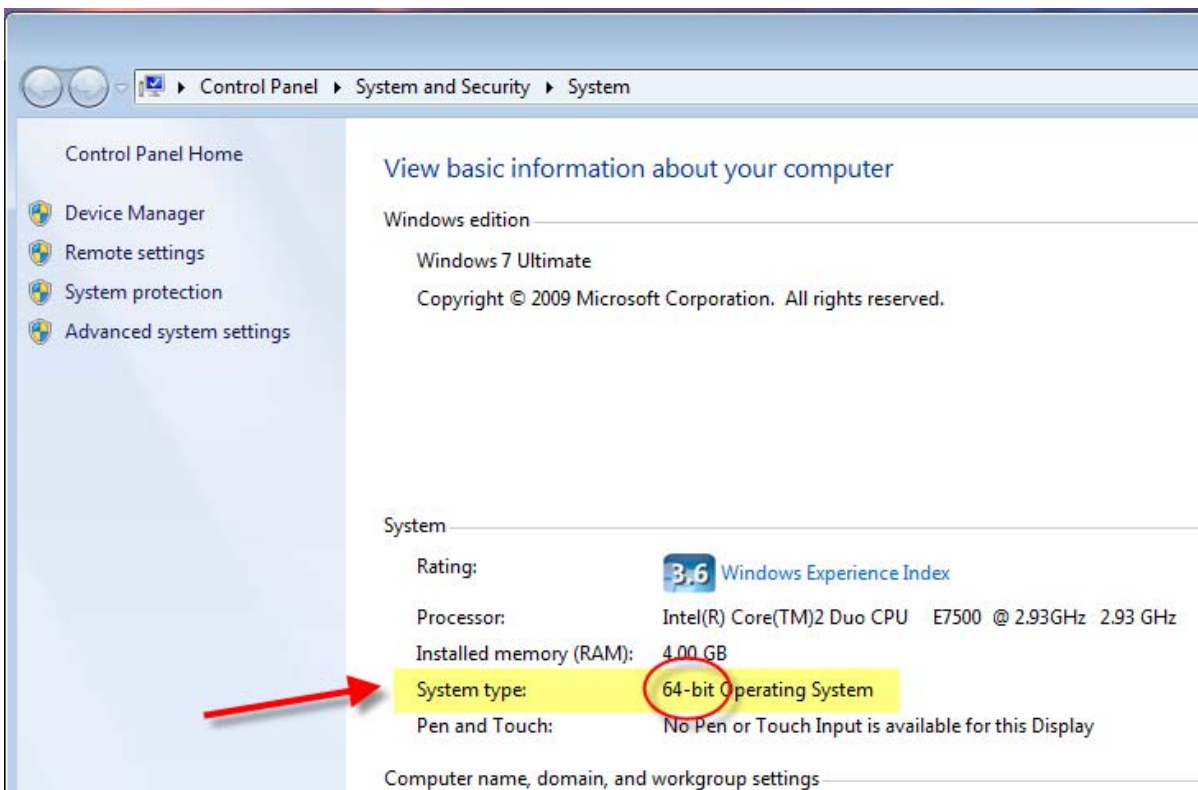
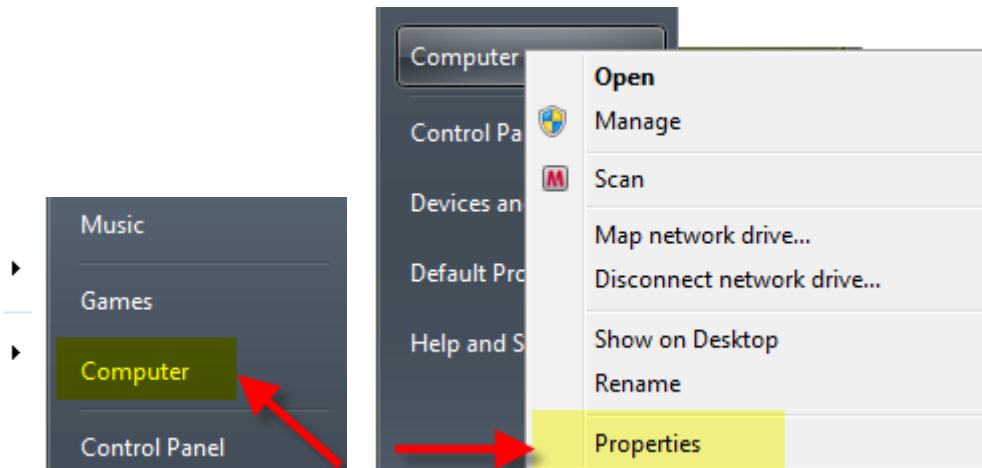
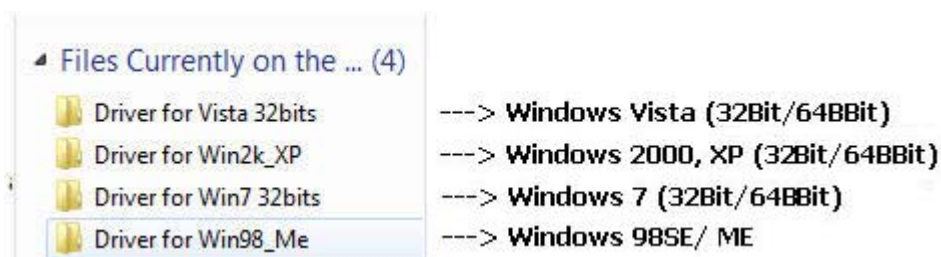


SABRENT USB to Serial Cables (PROLIFIC CHIPSET)

(1) Determine your Operating System: RIGHT-CLICK on the MY COMPUTER or COMPUTER (word or icon) to view System properties:



(2) Explore the CD and select the correct Operating System Folder for your computer:



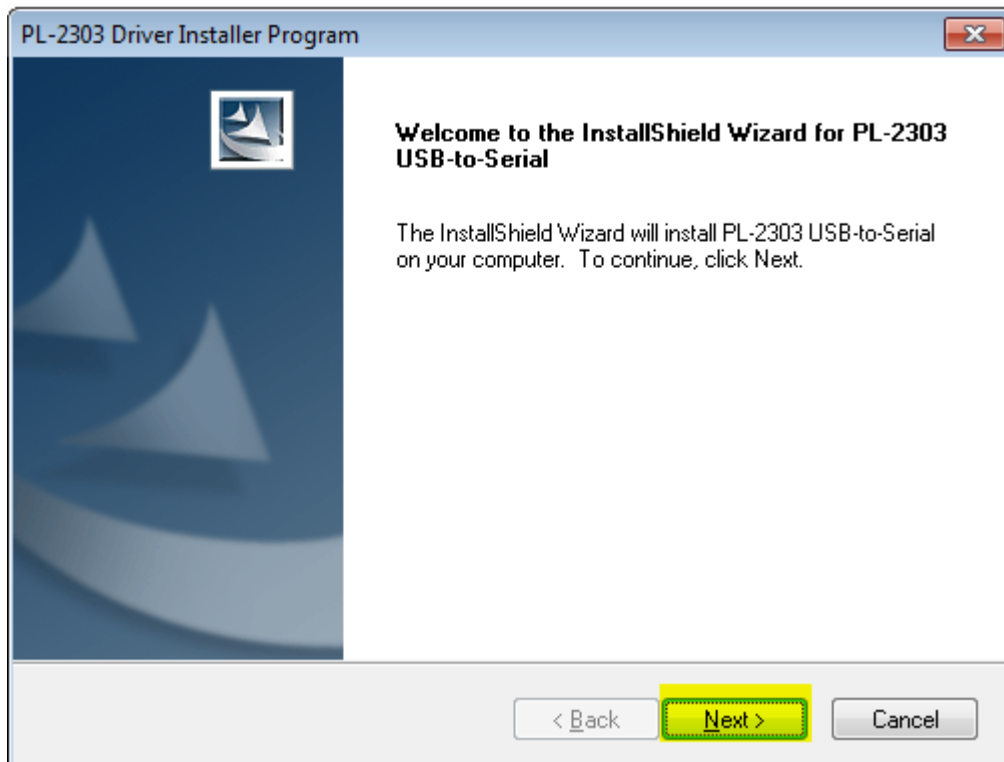
***Windows 7 Drivers can be downloaded here: <http://www.sabrent.com/drivers2/USBSERIALwin7.zip>

(3) For Windows 7 (32-Bit/64-Bit): Select and Open the “Driver for Win7 32Bits” Folder and Run the “PL2303_Prolific_Vista-332102” Setup File:

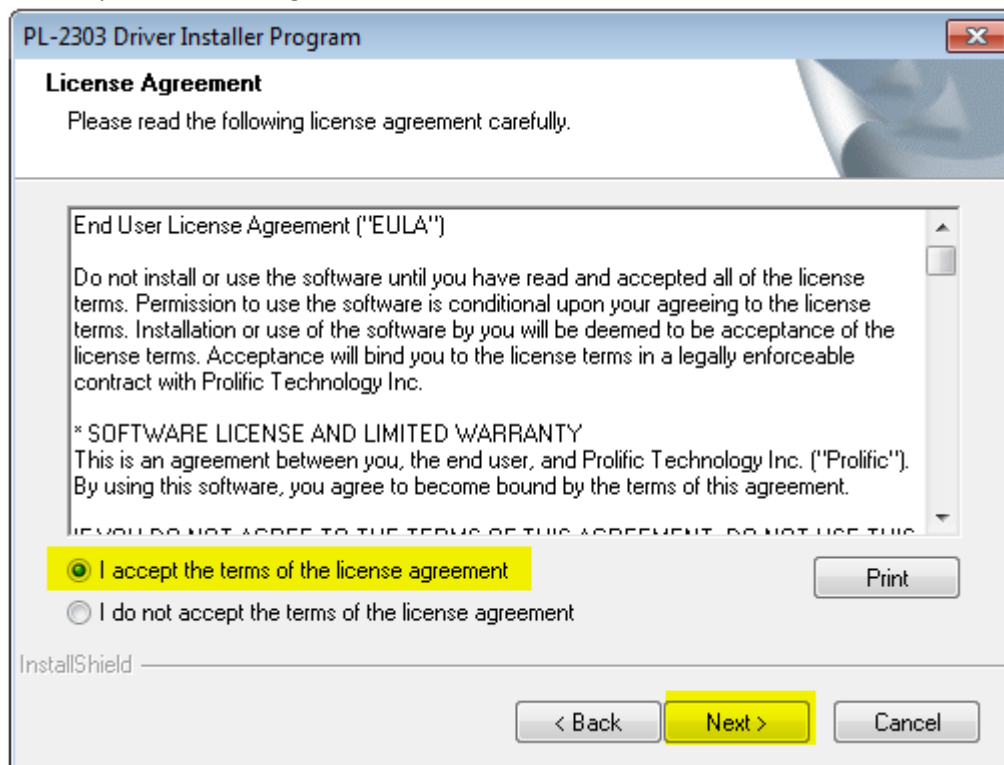
Files Currently on the ... (2)

- PL2303 Vista Driver Revision No
- PL2303_Prolific_Vista_332102

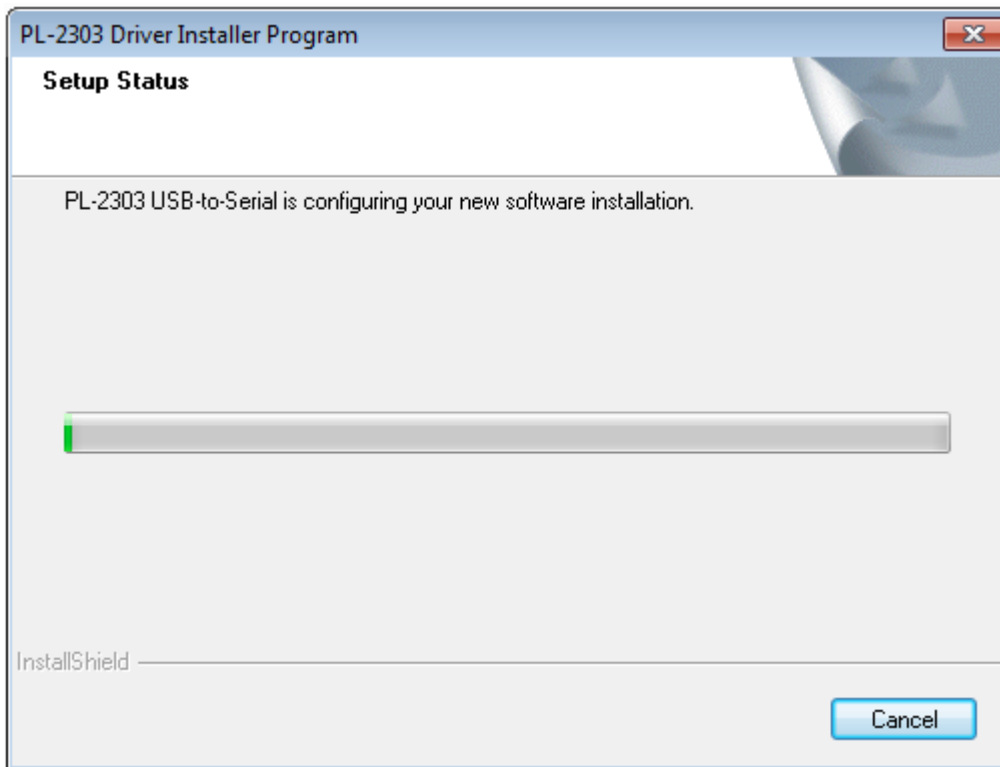
(4) The following prompt will appear, Select **Next**.



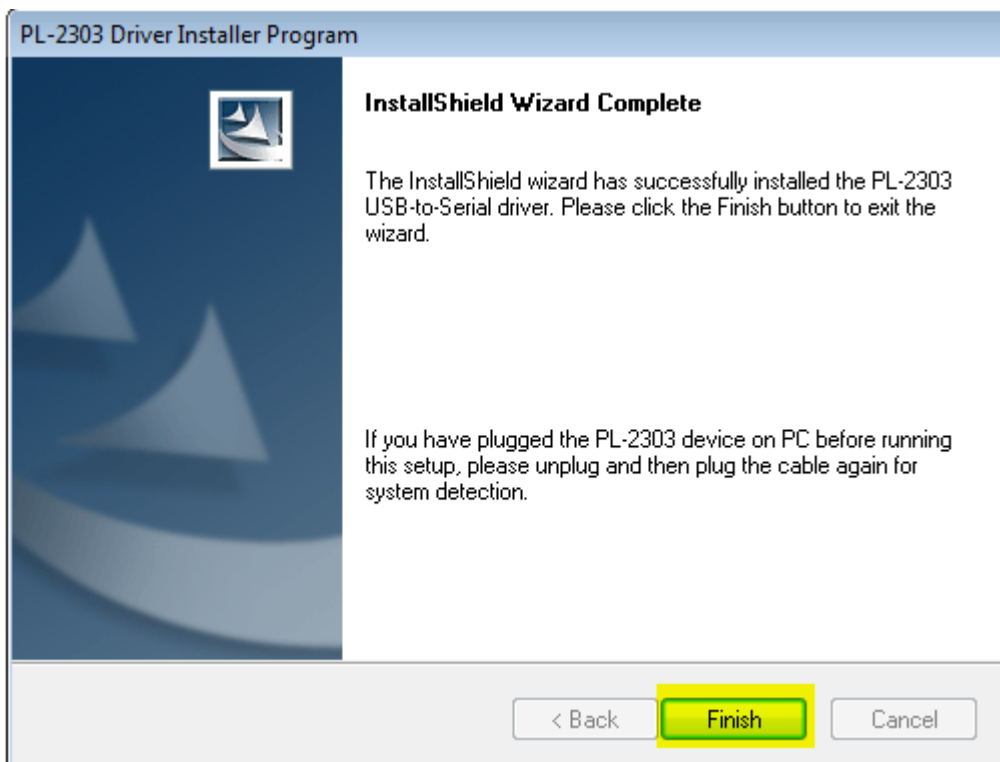
(5) Accept the License Agreement:



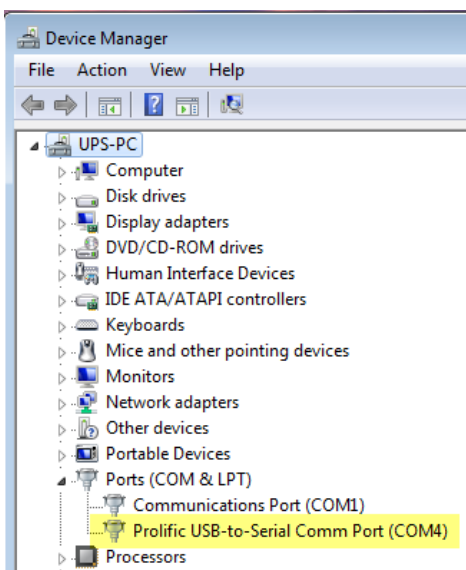
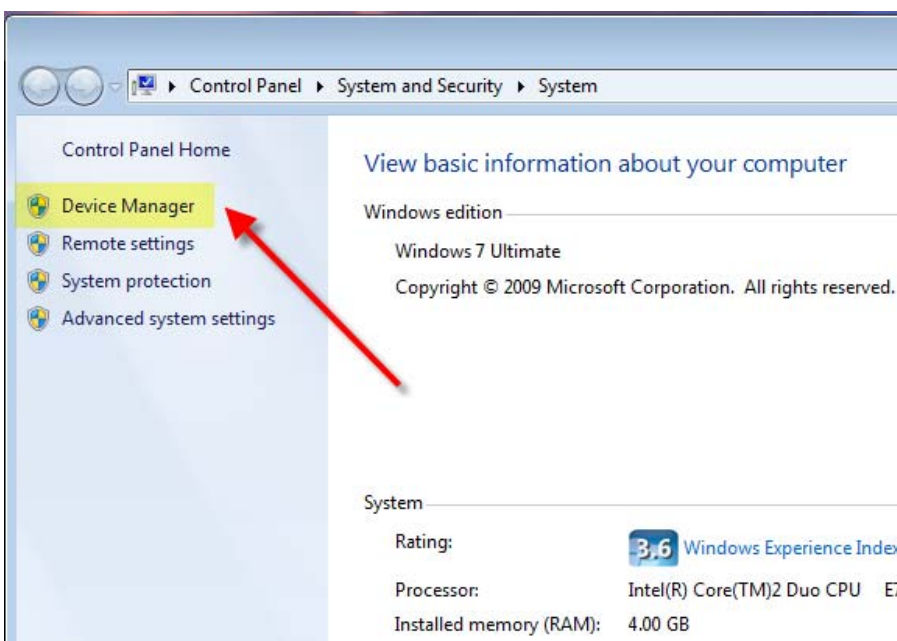
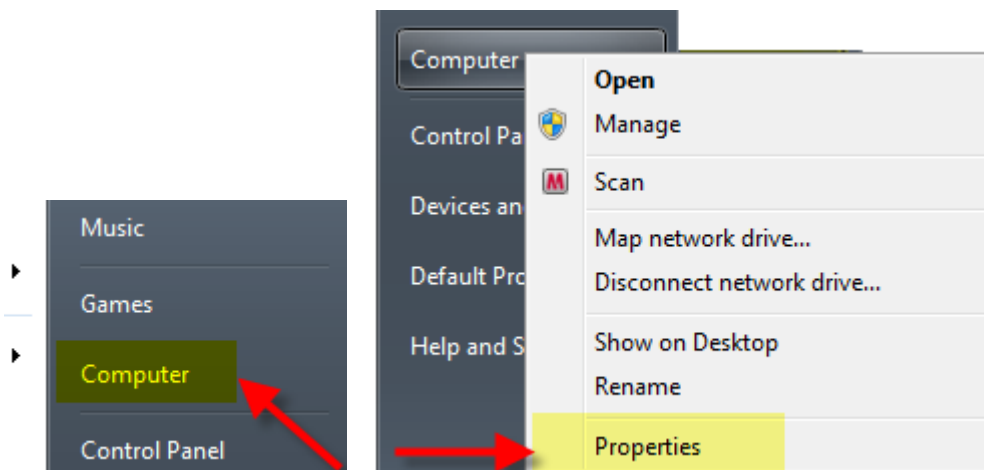
(6) The Driver will Install:



(7) Connect the USB Serial adapter to an available USB port and select **Finish**:

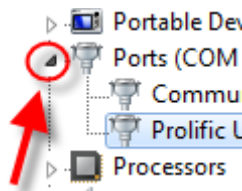


(8) Please confirm that the cable is fully installed and appears correctly in Device Manager. You will need to access this to modify the COM Port or Baud Rates. Go to Control Panel > Hardware and Sound > Device Manager. Alternatively, you type the words "Device Manager" in the Start button area. A third option, is to Right-Click on the word COMPUTER in the start menu and Right-Click, select Properties:



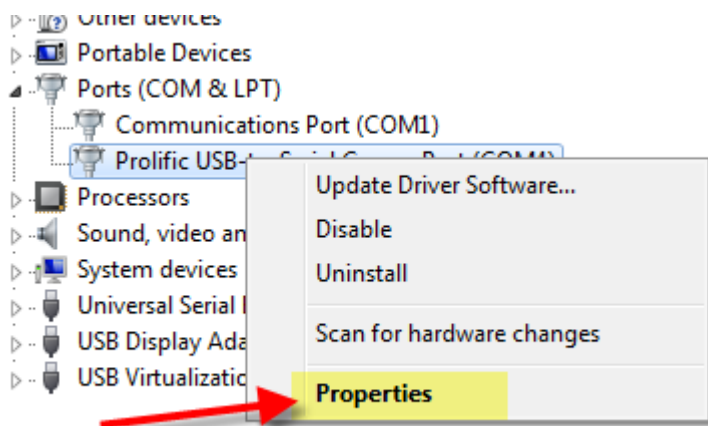
At this point the Sabrent Prolific Cable should be installed correctly, with **NO ERRORS**. If you get an error message such as an exclamation point (!), question mark (?), or **Coder Error 10**, you may need to skip to the **Troubleshooting Guide** (Page 7).

You can modify the specific COM port and other settings from this point as well.

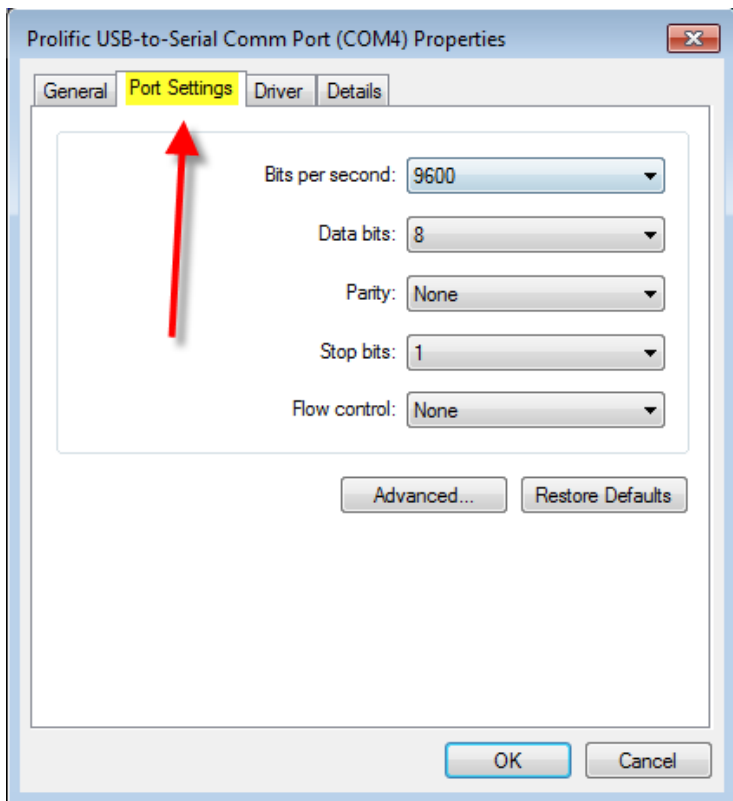


Click on the Arrow to the left of the Category to view details:

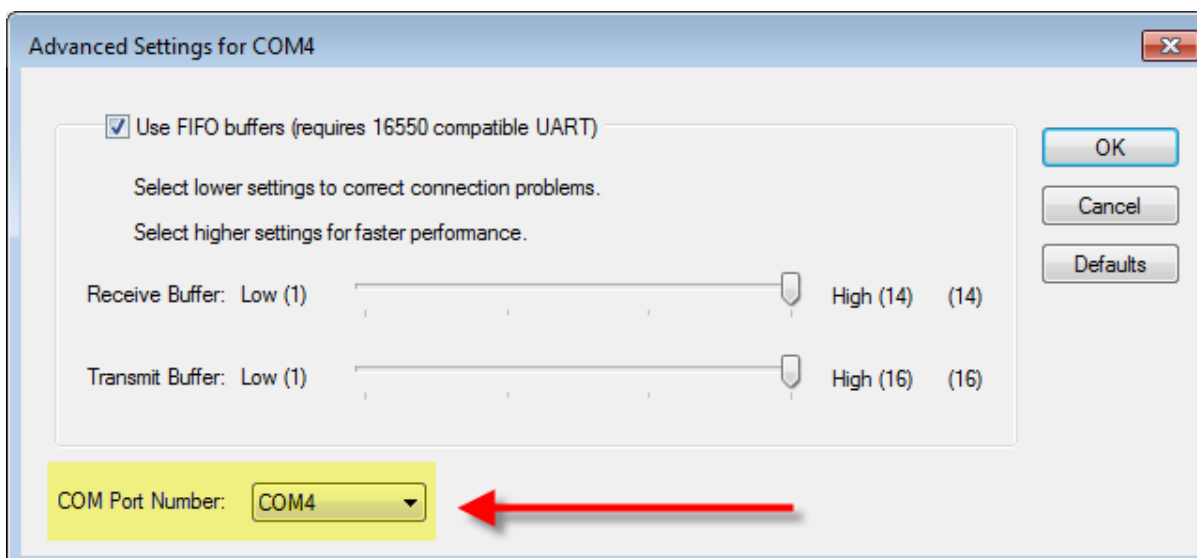
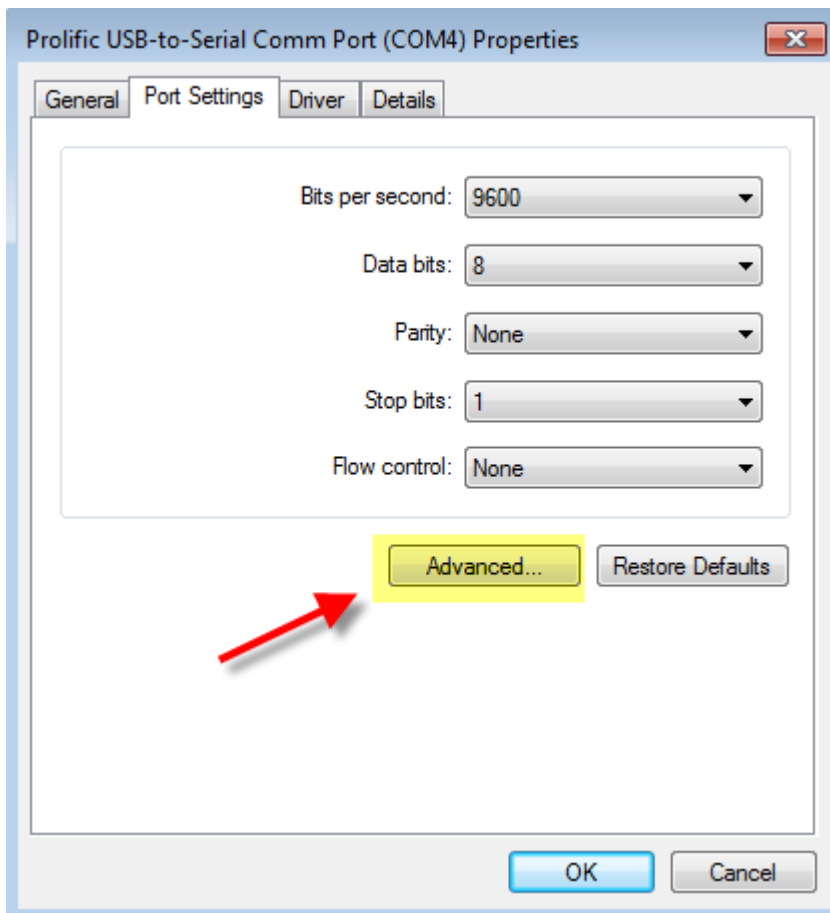
RIGHT-CLICK on **Prolific USB-to-Serial Comm Port (COM4)**, and select **PROPERTIES**:



Specific adjustments may need to be made to work with individual hardware solutions to which you are connecting this cable. You may want to consult the **DEVICE** manufacturer to determine the best settings for their product. See Below:

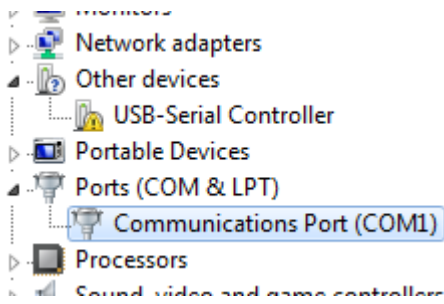


Clicking on Advanced... will offer more settings you can modify, such as the COM PORT.

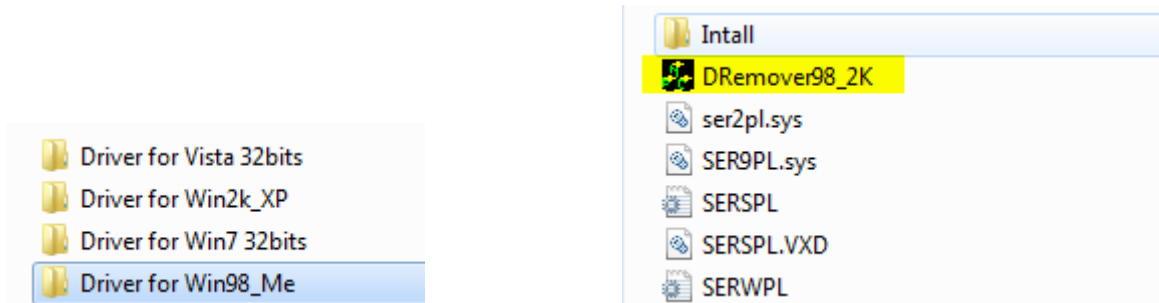


TROUBLESHOOTING GUIDE

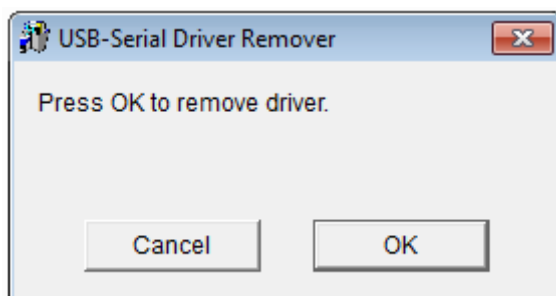
If you get an error message such as an exclamation point (!), question mark (?), or **Coder Error 10**, most often this indicates a problem with the Driver installation, and will occur mostly in Windows 64-bit versions.



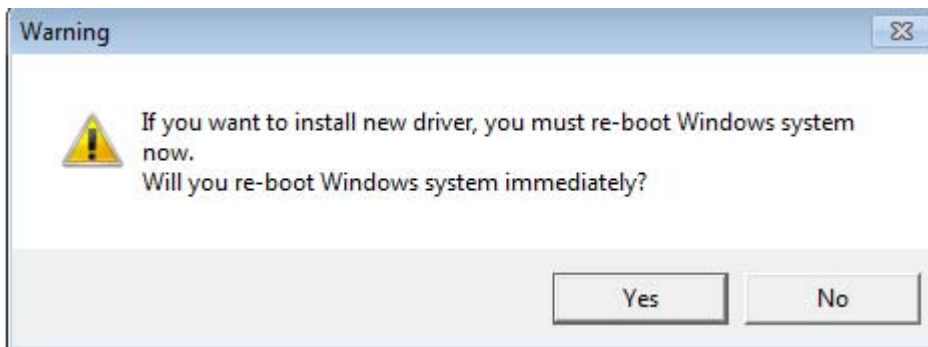
If you have prior versions of USB Serial converters you may need to first UNINSTALL them. This can be done easily by first running the Driver Removal Tool which can be found in the **Win98_Me** Folder on the CD:



Run the DRemover98_2K File to uninstall the Driver.



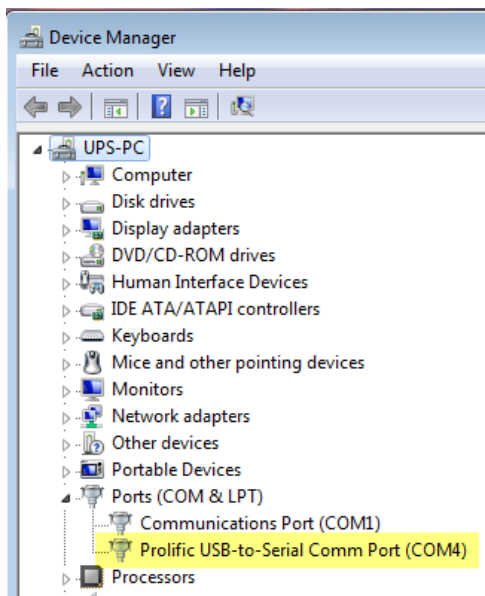
You will be prompted to Restart your computer, Click **Yes**, and remove the Serial Cable from the USB port:



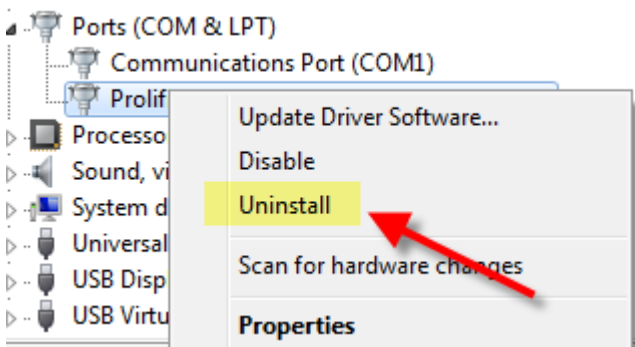
Return to Step (3) to reinstall the driver correctly.

Drivers can also be removed manually as follows:

1. **Go to the listing in Device Manager which shows your error message.** In this case it will likely appear in Other Devices (? or !) or under COM ports (Code Error 10).



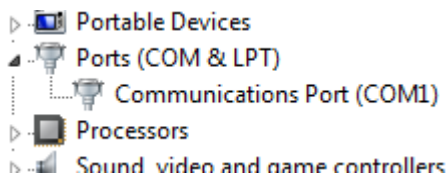
2. **RIGHT-CLICK** the listing, and select **UNINSTALL**



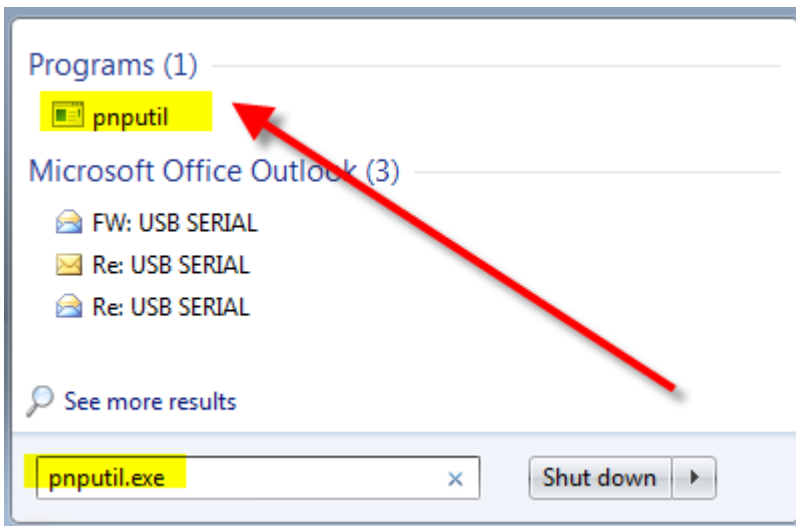
3. Be sure to CHECK the box for “Delete the driver....”



4. Go back to DEVICE MANAGER and confirm the listing is no longer there.



If this does not work, you may need to manually uninstall the old driver with windows command line: pnputil.exe



If you are still having difficulty with the installation, please determine the issue to take the right steps:

The USB Serial Cable does not appear in Device Manager:

1. Please try a different USB port, or even a 2nd computer to confirm the issue.
2. Call SABRENT TECHNICAL SUPPORT, 323-266-0911 Monday-Friday, 9am-5pm PST.

The USB Serial Cable does appear in Device Manager, but you cannot use your device with it:

1. Some devices, such as printers, require that you manually “capture” the COM Port you are trying to use: Click on Start, then Printers & Faxes. Right-click on the printer you are connecting to and click on Properties. Click on the Ports tab and check the ‘Virtual printer port for USB’ port. Click OK.
2. Some devices require more detailed installation steps, so you will need to check with the Device Manufacturer.
3. Lastly, some devices may not work with any USB converted COM Port and require “real” COM Ports. This is most common in very old devices.

